

YEAR

2013

LINK CHATHAM RD N (from WUHU ST to HONG CHONG RD)

COVERAGE (B) STATION

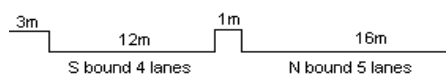
4208

ROAD NETWORK

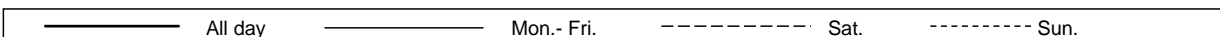
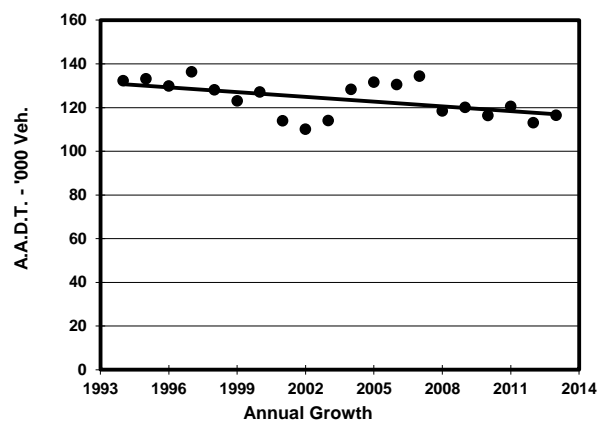
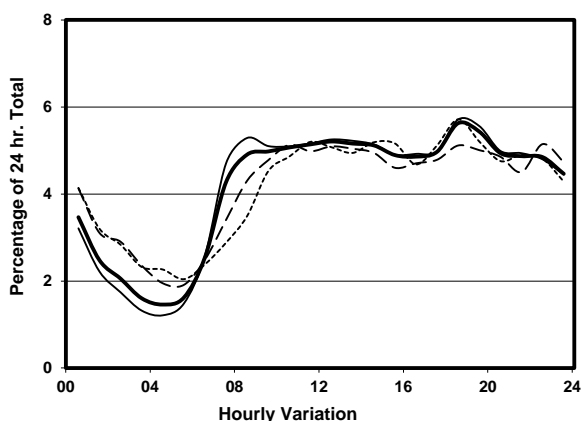
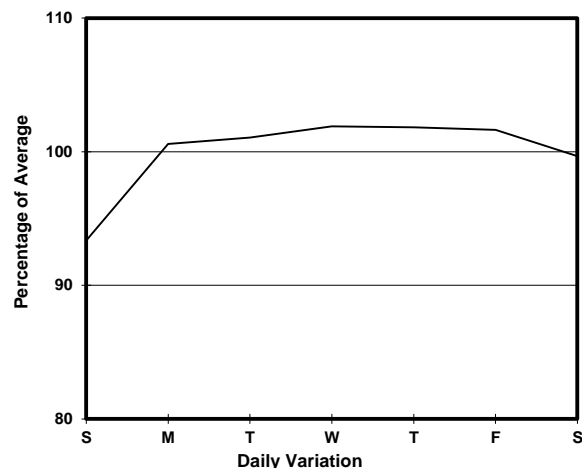
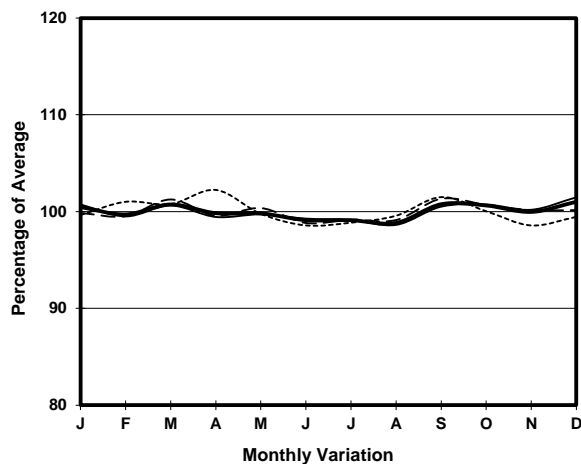
MAJOR

ROAD TYPE

PRIMARY DISTRIBUTOR



## 1. TRAFFIC FLOW VARIATION AND GROWTH



## 2. TRAFFIC CHARACTERISTICS (BY DIRECTION)

Parameter	All - Day	Mon. - Fri.	Sat.	Sun.
<b>SOUTH BOUND</b>				
A.A.D.T.	45920	45270	47670	48550
R 12 / 24 - %	57.2	58	54.1	56.9
R 16 / 24 - %	77	78.4	73	74.5
AM Peak Hour	0900-1000	0700-0800	0900-1000	0900-1000
One-way flow at AM peak hour	2390	2650	2560	2400
T - % (AM)	-	19.2	-	-
PM Peak Hour	1800-1900	1800-1900	1800-1900	1800-1900
One-way flow at PM peak hour	2090	2020	2010	2570
T - % (PM)	-	11.3	-	-
Prop.of commercial vehicles - 16 hr.	-	13.1	-	-
<b>NORTH BOUND</b>				
A.A.D.T.	70490	73190	68730	60600
R 12 / 24 - %	62.2	63.7	58.8	56.8
R 16 / 24 - %	82.5	83.9	78.8	78.1
AM Peak Hour	0900-1000	0800-0900	0900-1000	0900-1000
One-way flow at AM peak hour	3410	3770	3000	2540
T - % (AM)	-	17.7	-	-
PM Peak Hour	1800-1900	1800-1900	1800-1900	1800-1900
One-way flow at PM peak hour	4460	4750	3950	3670
T - % (PM)	-	13.6	-	-
Prop.of commercial vehicles - 16 hr.	-	15.6	-	-

## 3. OTHER INFORMATION AND COMMENT

**4. Vehicle classification and occupancy - Monday to Friday**

Time		Class of vehicle									
		Motor Cycle	Private Car	Taxi	Private LB	PLB	Goods veh.		Non Fr. Bus	Fr. Bus	
							Light	M & H		SD	DD
0700-0800	Pro	5.7	25.9	24.4	2.3	4.8	16.3	5.7	7.8	0.1	7.0
	Ocp	1.1	1.4	2.3	9.3	12.3	1.4	1.2	9.6	1.0	43.9
0800-0900	Pro	5.2	38.5	20.4	0.5	3.2	15.3	6.1	4.4	0.0	6.3
	Ocp	1.1	1.3	2.0	2.5	12.9	1.6	1.3	10.7	0.0	51.6
0900-1000	Pro	3.7	30.9	24.8	1.0	3.0	21.6	4.6	3.4	0.0	7.0
	Ocp	1.1	1.2	2.0	2.4	10.4	1.6	1.3	8.3	0.0	28.3
1000-1100	Pro	3.3	26.7	28.6	1.0	2.2	23.1	6.0	3.2	0.0	5.9
	Ocp	1.0	1.5	2.0	2.7	9.4	1.6	1.3	11.6	0.0	24.1
1100-1200	Pro	3.8	25.2	26.7	1.0	1.9	28.3	5.7	2.5	0.0	4.9
	Ocp	1.1	1.4	1.9	2.7	10.4	1.6	1.4	9.7	0.0	28.9
1200-1300	Pro	2.7	27.1	29.6	1.5	2.2	23.7	5.0	3.4	0.0	4.9
	Ocp	1.0	1.4	2.0	4.7	9.3	1.5	1.4	11.0	0.0	27.3
1300-1400	Pro	3.3	31.0	24.6	1.1	2.3	22.9	6.4	2.8	0.0	5.7
	Ocp	1.1	1.3	2.0	2.5	12.1	1.5	1.2	14.8	0.0	29.5
1400-1500	Pro	3.9	30.6	23.1	0.8	2.0	24.4	5.8	4.1	0.0	5.4
	Ocp	1.1	1.5	2.3	4.2	10.3	1.5	1.2	13.7	0.0	30.3
1500-1600	Pro	2.9	35.4	21.3	1.2	1.8	23.2	6.4	2.7	0.0	5.0
	Ocp	1.0	1.5	2.1	3.8	11.3	1.6	1.3	18.1	0.0	30.7
1600-1700	Pro	4.5	29.8	25.7	1.2	1.8	23.2	4.1	4.1	0.0	5.5
	Ocp	1.1	1.4	1.8	4.7	12.1	1.5	1.2	11.8	0.0	34.5
1700-1800	Pro	5.5	35.3	20.2	1.5	3.0	17.5	3.8	6.7	0.0	6.6
	Ocp	1.1	1.4	2.2	2.2	13.3	1.5	1.4	12.0	0.0	39.7
1800-1900 Peak hour	Pro	6.9	46.2	19.8	0.3	2.7	12.1	2.7	3.6	0.0	5.7
	Ocp	1.1	1.4	2.3	2.3	15.8	1.4	1.4	22.1	0.0	57.2
1900-2000	Pro	4.7	43.4	27.1	0.1	3.3	9.6	1.8	4.6	0.0	5.4
	Ocp	1.1	1.4	2.3	1.5	16.0	1.6	1.3	19.4	0.0	50.4
2000-2100	Pro	4.3	40.5	31.2	0.1	3.8	7.6	1.5	5.4	0.0	5.7
	Ocp	1.1	1.6	2.1	2.0	13.6	1.5	1.5	18.1	0.0	36.0
2100-2200	Pro	3.2	37.4	37.3	0.1	3.5	7.2	1.7	3.9	0.0	5.6
	Ocp	1.2	1.5	2.2	1.0	12.7	1.4	1.4	7.6	0.0	34.5
2200-2300	Pro	3.7	41.2	38.0	0.1	3.3	4.8	1.5	2.2	0.0	5.2
	Ocp	1.2	1.6	2.2	1.0	12.7	1.6	1.2	5.5	0.0	34.9
16 hours	Pro	4.2	34.2	26.4	0.8	2.8	17.5	4.3	4.0	0.1	5.7
	Ocp	1.1	1.4	2.1	4.0	12.4	1.5	1.3	12.9	1.0	36.7

**Legend**

- Pro.** Proportion of vehicles in % (Sum may not add up to 100% due to figure rounding)  
**Ocp.** Average occupancy of vehicles  
**M&H** Medium and Heavy